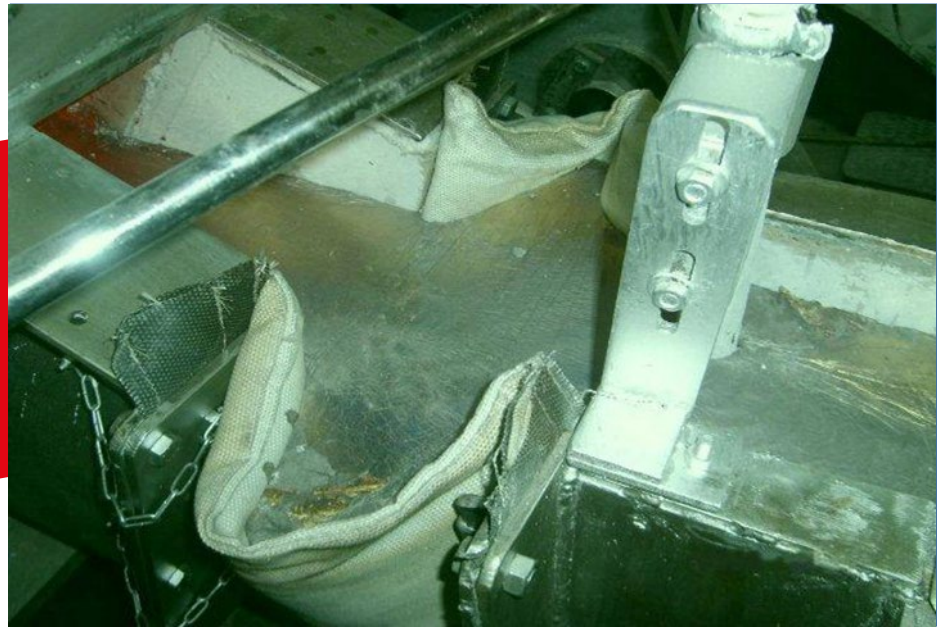




Wearflex® Launder Joints



CONTACT

INSULCON B.V. – The Netherlands
+31 (0) 167 565750
info@insulcon.com

INSULCON N.V. – Belgium
+32 (0) 3 711 02 78
insulconnv@insulcon.com

INSULCON GmbH - Germany
+49 (0) 2131 408548-0
insulcongbh@insulcon.com

INSULCON PROJECTS SA - Switzerland
+41 (0) 91 911739-0
infoch@insulcon.com

Wearflex® launder joints are flexible, multi-layer seals, used as a flexible launder connection between the tilting furnace and launder system which can withstand temperatures up to 750°C.

Traditionally, in the Non-Ferro industry, a one-layer seal or a cast-iron furnace spout is used as a connection between the tilting furnace and the launder system. However, a one-layer seal can be used only once due to possible leakage. As a result, units must be taken out of operation, resulting in production losses and direct maintenance and service costs.

To prevent these problems, engineers of the Insulcon Group developed a unique, flexible **Wearflex® launder joint**.

Contrary to the traditional one-layer seals, they can be used multiple times (up to 50 casts). This not only reduces maintenance, but also service costs. Due to their flexibility, **Wearflex® launders joints** are fully tear resistant. They have a durable construction and are easy to install and replace.

Advantages Wearflex® launder joints:

- Flexible tailor-made seals
- Can be used multiple times (up to 50 casts)
- Prevent leakage
- Lower maintenance and service costs
- Easy to install and replace
- Durable construction