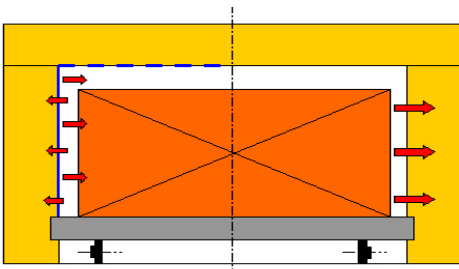


Insulcoat 1260-RFL



With Insulcoat 1260-RFL coating

Reduction in heat loss due to reflective 1260-RFL coating. A more uniform temperature profile in the outer faces of brick packs.

Without Insulcoat 1260-RFL coating

The outer face of the brick packs loses more heat and requires additional heating in order to ensure the temperature in the brick pack is kept uniform.

CONTACT

INSULCON B.V. – The Netherlands
+31 (0) 167 565750
info@insulcon.com

INSULCON N.V. – Belgium
+32 (0) 3 711 02 78
insulconnv@insulcon.com

INSULCON GmbH - Germany
+49 (0) 2131 408548-0
insulcongbh@insulcon.com

INSULCON PROJECTS SA - Switzerland
+41 (0) 91 911739-0
infoch@insulcon.com

Energy-saving in thermal process plants, including tunnel and bogie hearth kilns in the ceramic industry, is a topic that has received a great deal of attention over the last years.

The current up-to-date tunnel and bogie hearth- or bell kilns are being equipped with energy-saving, fire-resistant insulation, heat recovery and optimum burner control.

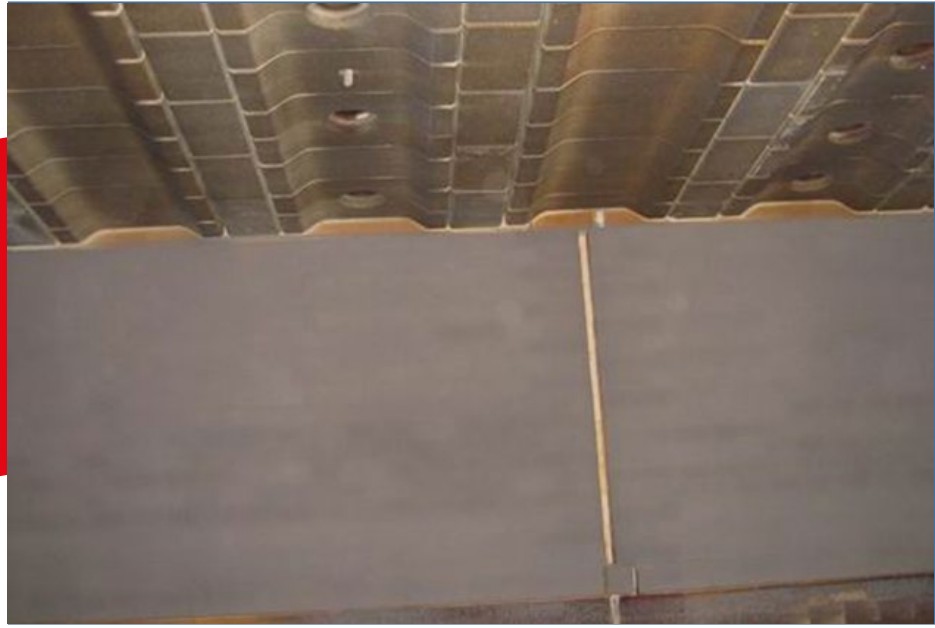
However, recent developments have established that additional energy savings and/or improved product quality can be achieved in up-to-date (new) as well as existing (older) kilns.

After an extensive development and test period, Insulcon has developed a reflective and energy-saving coating: **Insulcoat 1260-RFL**.

Insulcoat 1260-RFL can be applied quickly and durably on kiln walls and roofs by spraying, with a remarkably favorable result. The high reflectivity of the coating reduces heat loss and gives a more homogeneous firing of the bricks.

The effect is even more evident if the (tunnel) kiln roof is coated with **Insulcoat 1260-RFL** as well. In this case however, care must be taken to ensure that the expansion joints are free from coating and that burners and peepholes are adequately masked off while the coating is being applied.

Insulcoat 1260-RFL



CONTACT

INSULCON B.V. – The Netherlands
+31 (0) 167 565750
info@insulcon.com

INSULCON N.V. – Belgium
+32 (0) 3 711 02 78
insulconnv@insulcon.com

INSULCON GmbH - Germany
+49 (0) 2131 408548-0
insulcongmbh@insulcon.com

INSULCON PROJECTS SA - Switzerland
+41 (0) 91 911739-0
infoch@insulcon.com

The highest return of applying **Insulcoat 1260-RFL** is obtained on those kiln surfaces which attain temperatures exceeding 800°C, referred to as radiant surfaces. Since the coating is very quick to apply, an average firing zone in a tunnel kiln can be coated with **Insulcoat 1260-RFL** in one single day. This is certainly the case if the preparatory work such as eliminating dust, removing loose particles, masking off expansion joints and burners has already been carried out and the kiln has cooled down below 30°C.

The coating can be applied to any type of (refractory) surface such as refractory masonry, refractory concrete, suspended slabs, refractory fibre, etc.

Insulcoat 1260-RFL gives a further benefit for the last-named category (fibre) in particular. It protects the relatively soft fibre surface against erosion as well as minimising the release of fibres. It is therefore highly suitable for kiln doors and/or tracks with high temperature resistant fibre cladding.

Advantages of Insulcoat 1260-RFL:

- High reflectivity (improved quality as a result)
- Can be applied to the full range of (refractory) material types such as refractory bricks, suspended slabs, fibres, etc.
- Quick and easy to apply (1 day)